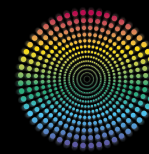
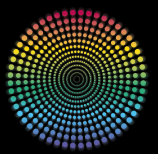


THE VIRTUAL MARKET PLACE® FOR YOUR DAILY BUSINESS

stage | set | scenery
INTERNATIONAL TRADE SHOW AND CONFERENCE



stage | set | scenery
INTERNATIONAL TRADE SHOW AND CONFERENCE



The Stage|Set|Scenery Virtual Market Place is your online marketplace for information and communicating with exhibitors – 365 days a year.

Preparing for the show – made easy

- You can use the Virtual Market Place to make appointments with exhibitors online before the show.
- The trade fair organiser lets you store interesting information and plan your tour of the show on your PC.
- Interactive hall plans let you find the exact location of exhibitors.
- Subscribe to the Stage|Set|Scenery newsletter and get all the latest updates on the show.
- Use the Networking Tool to contact exhibitors and other trade visitors.
- Download the list of exhibitors at Stage|Set|Scenery as a PDF or Excel file.

A three-day show packed with events

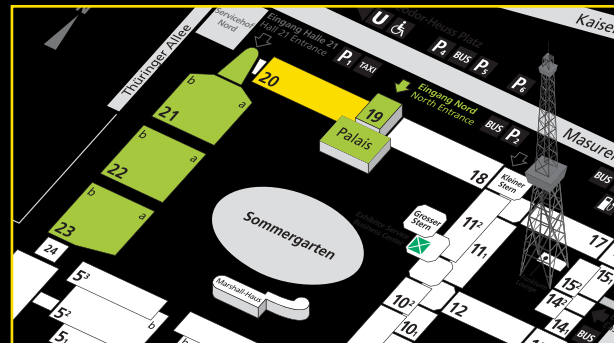
20 – 22 June 2017

Tues. + Wed.: 10.00 a.m. – 6.00 p.m.

Thurs.: 10.00 a.m. – 5.00 p.m.

Stage|Set|Scenery Nighton 21 June 2017,
starts at 6.30 p.m. in the Palais am Funkturm

North entrance



Admission (incl. Congress)

| | |
|---------------------------------------------|-----------|
| Day ticket: | 40.00 EUR |
| 3-day ticket: | 58.00 EUR |
| Groups of 10 persons and above, day ticket: | 20.00 EUR |
| Students (day ticket): | 10.00 EUR |
| Stage Set Scenery Night: | 45.00 EUR |

(Reduced-rate tickets for DTHG & GTKos company members and in advance from the online ticket shop at www.stage-set-scenery.de)

Information on accommodation and how to get there:

www.stage-set-scenery.com

Contact:

Sarah Baumann
E-Mail: s.baumann@messe-berlin.com
T: +49 30 3038 2311



LIGHTING AND LIGHTING DESIGN

20–22 June 2017
Berlin Exhibition Grounds

www.stage-set-scenery.com

www.virtualmarket.stage-set-scenery.de



(as per April 2017)

Messe Berlin GmbH · Messedamm · 22 14055 Berlin, Germany
Tel. +49 30 30380 · Fax +49 30 30382089
www.stage-set-scenery.com · stage-set-scenery@messe-berlin.de

der Fachverband
DTHG
Deutsche Theatertechnische Gesellschaft

Messe Berlin

The Stage|Set|Scenery is the meeting place for manufacturers, lighting designers and lighting engineers. Inside the display halls visitors can find out about state-of-the-art lighting technology for events, shows, studios and the stage.

Lighting technology and lighting design highlights at a glance:

1. LightLab, 20 – 22 June
2. Guided tours of the show, 20 – 22 June
3. Symposium of the Scenographers' Association, 22 June

1. LightLab

Inside the LightLab in Hall 20 – curated by Manfred "Ollie" Olma of mo2 design and installed with the support of NÜSSLI Deutschland – discussion will focus on the latest lighting design trends and practical issues, for example how to properly illuminate products with reflective surfaces, or how best to combine camerawork and make-up artistry for optimum results.

Days one, two and three will focus on the past, present and future respectively and look at developments in lighting design, the latest media and lighting technology and various control protocols.

Curated by:



Sponsored by:



2. Guided tours of lighting technology and lighting design will take place

daily at 11.15 a.m. Tours begin at the entrance to the LightLab.

3. Symposium of the Scenographers' Association

on lighting and stage design with Yaron Abulafia, 22 June from 12 midday to 4 p.m., Hall 23 / Round Table

Tuesday, 20 June 2017

| | |
|-------------------------|----------------------------------------------------------------------------------------------------------------------------------------------------------------------------------------------------------------------------------------------------------------|
| 10.30 a.m. – 11.15 a.m. | Let's talk about lighting Manfred „Ollie“ Olma (mo2design), Thomas Nell (Spotlight s.r.l.), ARRI Arnold & Richter Cine Technik GmbH & Co. Betriebs KG, ETC – Electronic Theatre Controls GmbH, GLP German Light Products GmbH, Lightpower GmbH |
| 11.30 a.m. – 12.15 a.m. | Let's talk about lighting Manfred „Ollie“ Olma (mo2design), Ingo Dombrowski (ROBE lighting s.r.o), Markus Klüsener (Martin by HARMAN), Philip Hesselton (Philips Entertainment), Andreas Reinbacher (Preworks GmbH) |
| 12.30 a.m. – 2.00 p.m. | Let's talk about networks Manfred „Ollie“ Olma (mo2design), ETC – Electronic Theatre Controls GmbH, Eckart Steffens (SOUNDLIGHT) |
| 2.30 p.m. – 4.00 p.m. | Let's talk about projection Manfred „Ollie“ Olma (mo2design), Andreas Gause (Gerriets GmbH) |
| 4.15 p.m. – 5.00 p.m. | Lighting without power Frank Lohse (Lunatx Special Effects GmbH) |

Wednesday, 21 June 2017

| | |
|-------------------------|----------------------------------------------------------------------------------------------------------------|
| 10.30 a.m. – 11.15 a.m. | Lighting – a visual health hazard? Stage lights – a health hazard Sven Kubin (HAW Hamburg) |
| 11.30 a.m. – 12.15 a.m. | mo2 design Performance How to illuminate a glossy surface Manfred „Ollie“ Olma (mo2design) |
| 12.30 a.m. – 1.15 p.m. | Network basics: Hardware ETC – Electronic Theatre Controls GmbH, Eckart Steffens (SOUNDLIGHT) |
| 2.00 p.m. – 2.30 p.m. | mo2 design Performance How to illuminate flowers Manfred „Ollie“ Olma (mo2design) |
| 2.30 p.m. – 3.15 p.m. | Projection: Hardware / Software Part 01 |
| 3.15 p.m. – 4.00 p.m. | mo2 design Performance How to illuminate humans Manfred „Ollie“ Olma (mo2design) |
| 4.00 p.m. – 4.45 p.m. | Projection: Hardware / Software Part 02 |

Thursday, 22 June 2017

| | |
|------------------------------------------|------------------------------------------------------------------------------------------------------------------------------------------------------------------------------------------------------------------------------------------------------|
| 10.30 a.m. – 11.15 a.m. | Social trends and impact on viewing habits Manfred „Ollie“ Olma (mo2design), Harald Scherer (xEMP extra Entertainment Media Publishing oHG), Thomas Nell (Spotlight s.r.l.), Ass. Prof. Daniel Lisowski (University of Wisconsin – Madison) |
| 11.30 a.m. – 1.00 p.m. | Education today and tomorrow Gunther Hecker (Cue GmbH), Matt Finke (LOOP Light), JoJo Tillmann, ETC – Electronic Theatre Controls GmbH |
| Standardising technical planning: | |
| 1.15 p.m. – 2.15 p.m. | How can standardisation help – the case of an imaginary production, with a focus on networks, projection and lighting Manfred „Ollie“ Olma (mo2 design), Michael Hantelmann (hantmade GmbH), Jens Müller (AutoSTAGE GmbH) |
| 2.30 p.m. – 3.30 p.m. | 2. Award Procedure & Undertaking Manfred „Ollie“ Olma (mo2 design), Angelo Plate (SATURN production) |
| 3.45 p.m. – 4.45 p.m. | 3. Pre-Programming & Show Manfred „Ollie“ Olma (mo2 design) |

